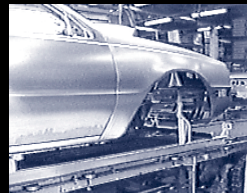


# **WEBSTER INDUSTRIES, INC.**

.....



**Webster  
Chain**



**For The  
Automotive  
Industry**

[www.websterchain.com](http://www.websterchain.com)

204R-2

PART OF AUTOMOTIVE MANUFACTURING  
SINCE THE BEGINNING OF THE ASSEMBLY LINE

## Over a Century of Experience

Webster began in 1876 manufacturing material handling components and had achieved worldwide recognition by the turn of the century as the foremost power transmission specialists manufacturer. The product line expanded to include bulk commodity and raw material handling products over the next one hundred years.



## Precision and Quality Rate First In All Webster Plants

Today Webster Industries, Inc. consists of three manufacturing facilities. Corporate headquarters are maintained in Tiffin, Ohio with additional facilities located in Tualatin, Oregon and Meridian, Mississippi. Plant capabilities include a malleable iron foundry, structural steel and fabrication, engineered class chain manufacturing, complete machining capabilities, and assembly and finishing operations.

Webster offers a variety of standard chain from inventory as well as specials on a make-to-order basis. With over 150,000 feet of completed chain in inventory, Webster can better serve the needs of its customers. Webster's extensive product line includes: Engineered Steel Chains, Steel Bushed Roller Chain, Hardened Steel Bushed Rollerless Chain, Malleable Cast and Combination Chain, Welded Steel Chain, Accessories and Components, Drive Chain, ENDURO FLITE - Formed Piano Hinge Conveyor, Vibrating Conveyors, Apron Conveyors, Cast and Steel Sprockets and Traction Wheels, and Malleable Iron Castings.

## Engineering Provides Custom and Specialty Design Capabilities

Webster's century old industry reputation for precision and quality in all chain products begins with a full, on-staff engineering department. Webster's engineering department designs and specifies standard products and custom specification requirements. Webster also maintains modern laboratory facilities to provide constant chemical and physical control of workmanship, materials, and design.



Webster's **experience** in the automotive industry has helped solve some of the most difficult design and handling problems. A combination of **expertise** and **innovation** in engineering and in new manufacturing technologies at Webster, has provided engineers, maintenance and project designers a **reliable** supply source for both new product needs and retrofit components or maintenance replacement orders.

Webster maintains a selective distributor network servicing the U.S. coast to coast, Canada, and worldwide, supported by a team of technically competent sales representatives.

Webster is your chain specialist.  
Webster chain products are constructed to provide dependable and durable life to your handling and conveying systems.



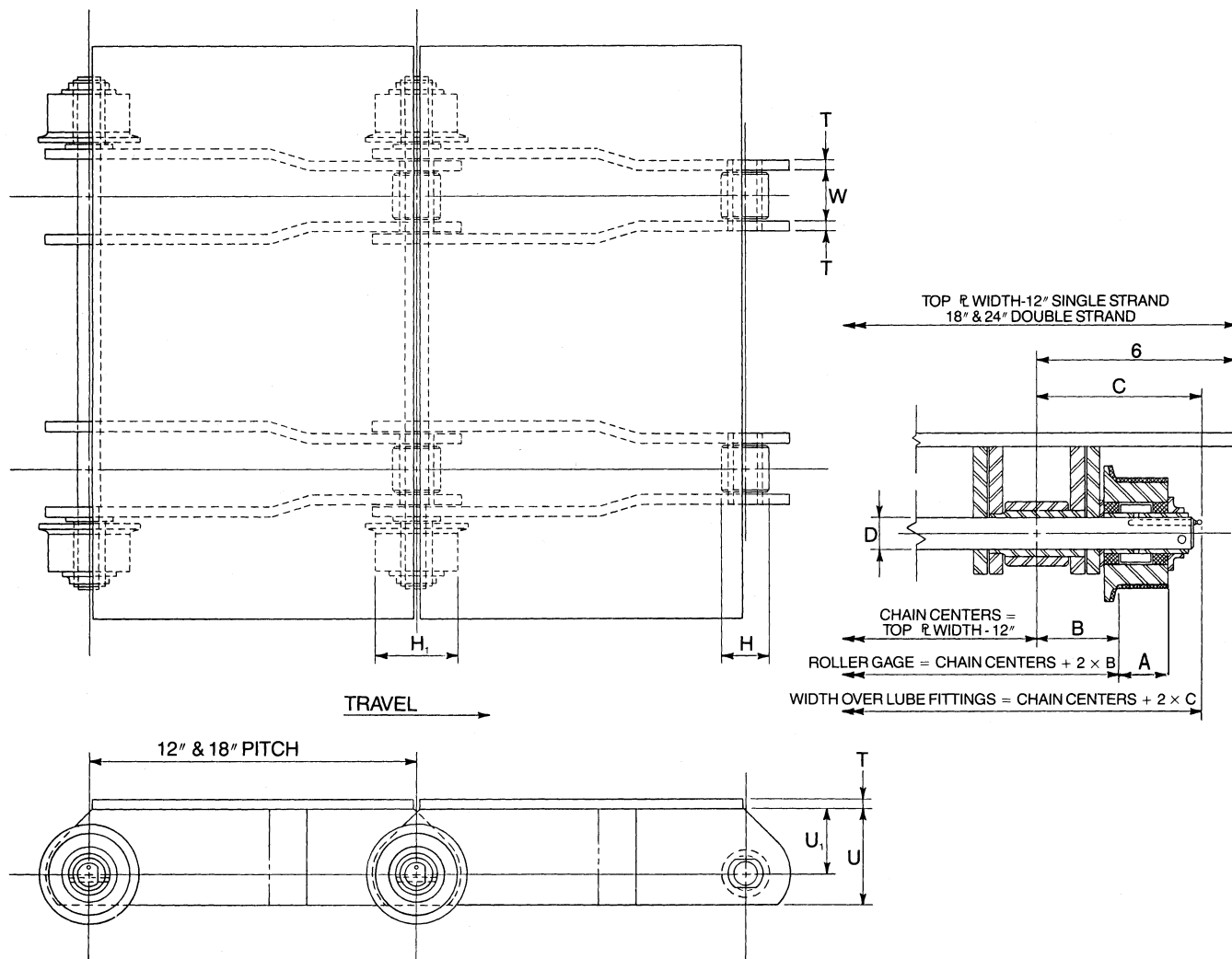
## Webster Simplifies Ordering

A series of standard products for the automotive-related industries is included in this catalog. Engineering prints, specification tables and optional features are provided in a quick-glance reference. For additional engineering data and information on these and other products, please contact Webster's regionalized customer service department at **1-800-243-9327**.

# Flat Top Chain

ISO 9001:2000

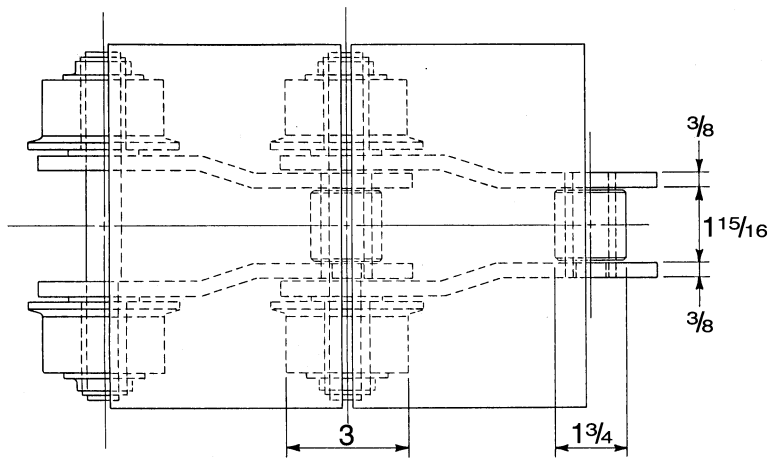
Final assembly conveyors, mechanical and paint repair conveyors. Dimensions shown here can be changed to customer requirements.



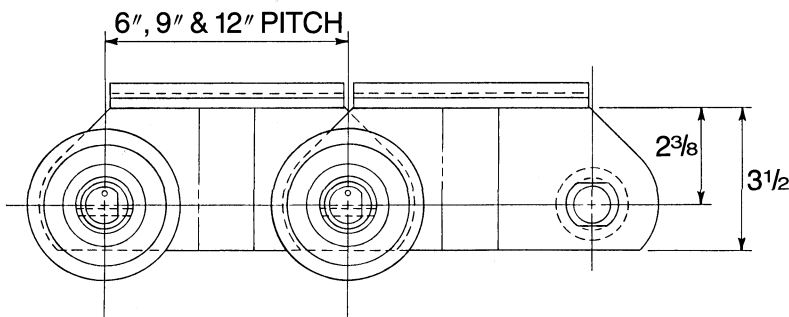
## FLAT TOP CHAIN

Average Ultimate Strength Lbs.	Rated Working Load Lbs.	Max. Load Per Outboard Roller	DIMENSIONS IN INCHES									
			Pin Dia.	Inside Width	SIDE BARS			ROLLERS				
			D	W	T	U	U <sub>1</sub>	H	H <sub>1</sub>	A	B	C
64,000	8,230	3,500	7/8	1 <sup>15</sup> / <sub>16</sub>	3/8	3 <sup>1</sup> / <sub>2</sub>	2 <sup>3</sup> / <sub>8</sub>	1 <sup>3</sup> / <sub>4</sub>	3	1 <sup>3</sup> / <sub>8</sub>	2 <sup>5</sup> / <sub>16</sub>	4 <sup>5</sup> / <sub>8</sub>
						4	2 <sup>7</sup> / <sub>8</sub>		4			
61,000	8,750	5,000	1	1 <sup>3</sup> / <sub>4</sub>	3/8	3 <sup>1</sup> / <sub>2</sub>	2 <sup>1</sup> / <sub>4</sub>	1 <sup>3</sup> / <sub>4</sub>	3	1 <sup>3</sup> / <sub>8</sub>	2 <sup>1</sup> / <sub>4</sub>	4 <sup>9</sup> / <sub>16</sub>
						4	2 <sup>3</sup> / <sub>4</sub>		4			
56,000	9,400	5,000	1	1 <sup>15</sup> / <sub>16</sub>	3/8	4	2 <sup>7</sup> / <sub>8</sub>	1 <sup>7</sup> / <sub>8</sub>	4	1 <sup>1</sup> / <sub>2</sub>	2 <sup>3</sup> / <sub>8</sub>	4 <sup>25</sup> / <sub>32</sub>
85,000	12,850	7,500	1 <sup>1</sup> / <sub>4</sub>	1 <sup>15</sup> / <sub>16</sub>	1/2	4	2 <sup>11</sup> / <sub>16</sub>	2 <sup>1</sup> / <sub>4</sub>	4	1 <sup>17</sup> / <sub>32</sub>	2 <sup>9</sup> / <sub>16</sub>	5

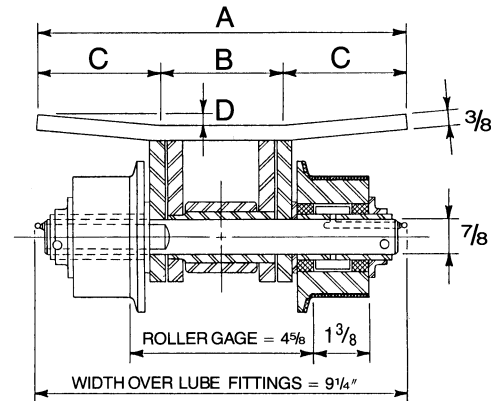




TRAVEL →



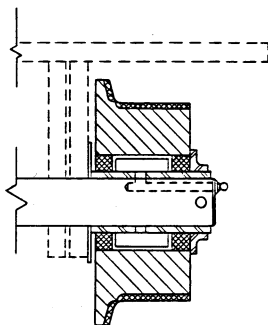
Conveyor and transfer chains for skids with casters. Dimensions shown here can be changed to customer requirements.



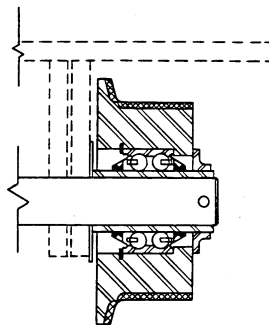
TOP & L DIMENSIONS			
A	B	C	D
9	2	3 1/2	1/4
9	3	3	1/2
6 1/2	3	1 3/4	15/32

Rated Working Load-8230#  
Average Ultimate Strength-64,000#  
Max Load Per Outboard Roller-3500#

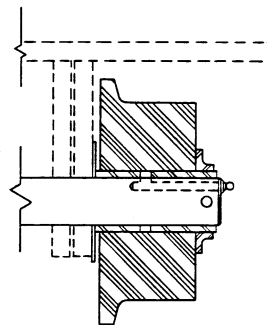
## ROLLERS FOR FLAT TOP AND GULL WING CHAINS



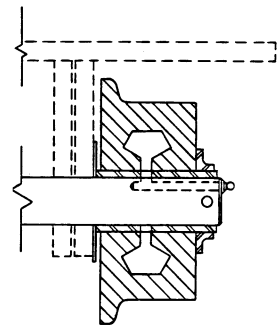
Roller Bearing, Steel or Duramal Roller With Induction Hardened Tread.  
3" and 4" Diameter  
Friction Factor—3"—.04, 4"—.03



Double Row Ball Bearing, Steel or Duramal Roller With Induction Hardened Tread.  
3" and 4" Diameter  
Friction Factor-3" - .03, 4" - .025



Plain Bearing UHMW Polyethylene Roller  
3" and 4" Diameter  
Friction Factor—3"—.06, 4"—.05



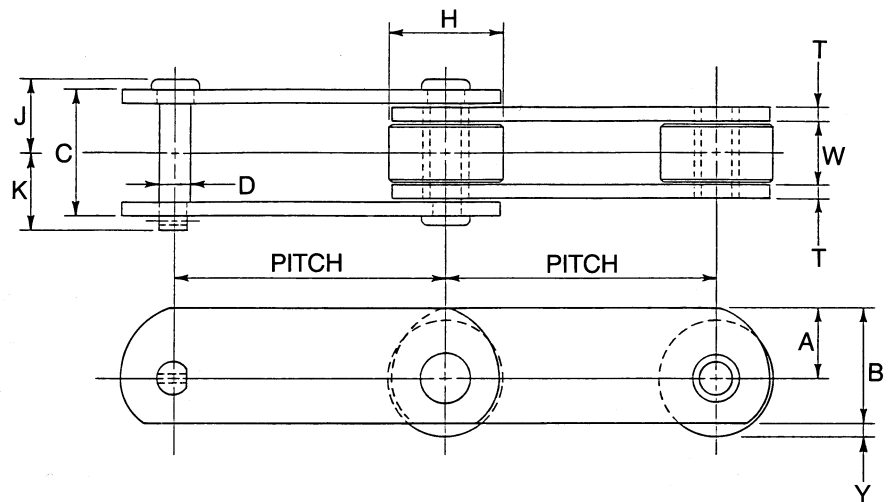
Plain Bearing White Iron Roller  
3" Diameter  
Friction Factor-0.15

# High Side Bar Steel Bushed Roller Chain CC5AF

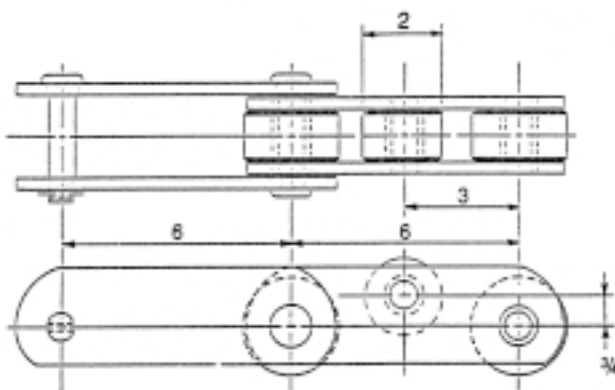
ISO 9001:2000

This family of high side bar roller conveying chains is designed to meet the requirements of package, accumulating, assembly, and storage conveyors.

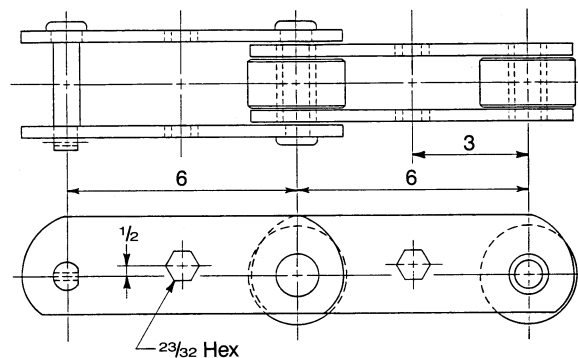
When you choose Webster chain, you not only get the highest quality chain, but chain that has been approved by major automotive manufacturers.



HIGH SIDE BAR STEEL BUSHED ROLLER CHAIN																
Chain No.	Average Pitch Inches	Average Weight Per Ft. Lbs.	Average Ultimate Strength Lbs.	Rated Working Load Lbs.	Friction Factor		DIMENSIONS IN INCHES									
					fr											
					Dry	Lubed	A	B	C	D	H	J	K	T	W	Y
S1184M3	3.000	4.0	14,000	2,300	0.17	0.105	15/16	1 1/2	1 15/16	7/16	1 1/2	1 3/32	1 5/32	3/16	1 1/8	3/16
S1195M3	4.000	5.0	14,000	2,300	0.125	0.08	1 1/4	2	1 5/16	7/16	2	1 3/32	1 5/32	3/16	1 1/8	1/4
CC5AF	6.000	10.5	50,000	4,800	0.16	0.10	1 1/2	2 1/2	2 11/16	1 1/16	2 1/2	1 17/32	1 21/32	5/16	1 3/8	1/4
S6910	6.000	20.0	82,000	9,200	0.17	0.105	1 3/4	3	3 13/16	7/8	3	2 5/32	2 15/32	3/8	2 1/4	1/4



**CC5BF SBR CHAIN WITH  
MID PITCH RAISED ROLLER  
FOR ACCUMULATING CONVEYORS**



**CC5AF SBR CHAIN WITH  
MID PITCH HEX HOLE FOR  
ROLLER FLIGHT CONVEYORS**

# C131 Combination and HSB131 Rollerless Chain With Pusher Dogs

ISO 9001:2000

Fast transfer chains.

## C-131 COMBINATION CHAIN

Rated Working Load

Duramal-3750#

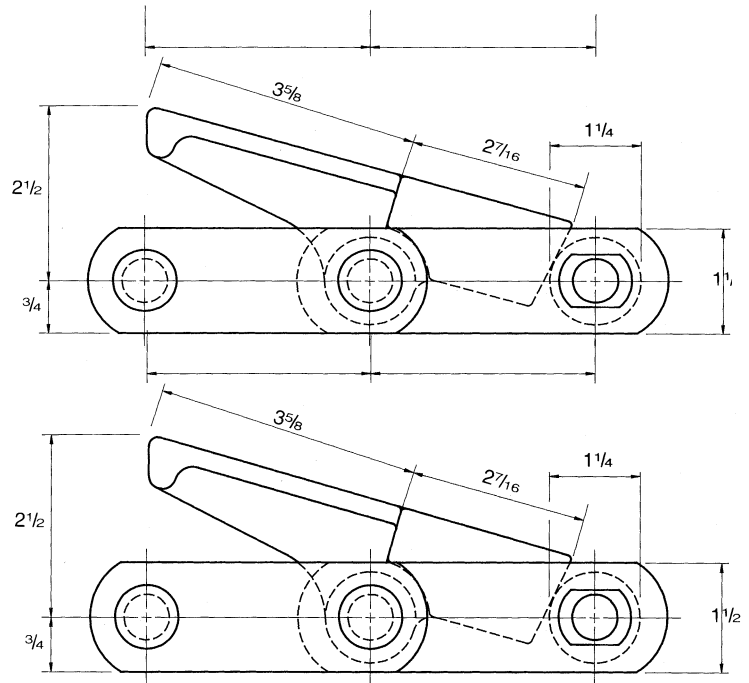
Average Ultimate Strength

Duramal-30,000#

## HSB 131 ROLLERLESS CHAIN

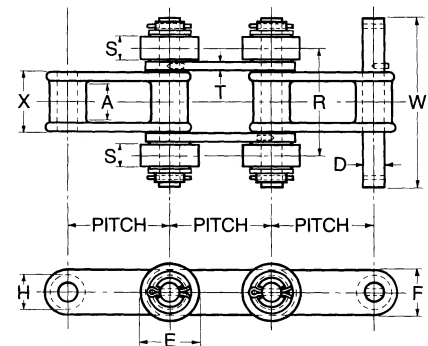
Rated Working Load-4380#

Average Ultimate Strength-40,000#



# Combination Chain With Outboard Rollers

Designed for use in light single strand car hauls, truck pushers and assembly line conveyors.



## COMBINATION CHAIN WITH OUTBOARD ROLLERS

Chain No.	Average Pitch Inches	Approx. Links In 10 Ft.	DIMENSIONS IN INCHES											
			Average Ultimate Strength Lbs.	Rated Working Load Lbs.	Barrel Length	Side Bar Width	Max. Spk. Width	Pin Dia.	Nominal Barrel Dia.	Roller Dia.	Over-all Cotted	C To C Rollers	Roller Face Width	Side Bar Thickness
			Duramal	Duramal	X	F	A	D	H	E	W	R	S	T
CR-N110	6.000	20	30,000	4,800	2 7/8	1 1/2	1 15/16	5/8	1 1/4	2	6 5/8	4 11/16	7/8	3/8
CR-N111	4.760	25	45,000	7,500	3 3/8	1 3/4	2 3/8	3/4	1 7/16	2 1/4	7 3/8	5 1/4	1 5/16	3/8
CR-131	3.075	39	30,000	3,750	2	1 1/2	1 1/8	5/8	1 1/4	2	5 3/4	3 13/16	7/8	3/8
CR-N132	6.050	20	62,500	10,400	4 3/8	2	3 1/8	1	1 3/4	3	9	6 5/8	1 1/8	1/2
CR-188	2.609	46	17,500	2,340	1 9/16	1 1/8	1 5/16	1/2	7/8	1 1/2	4 3/8	2 13/16	5/8	1/4

Available in cast malleable iron or welded steel construction featuring Webster's exclusive Portallooy® heavy duty features. With greater strength and carrying capacity, drag chain is used in handling cast chips in engine machining plants as well as in a variety of other conveying applications.

FIGURE 1

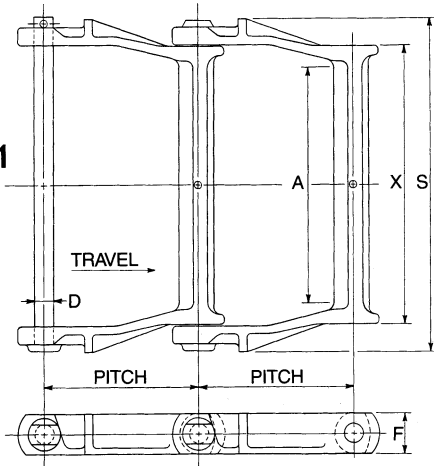
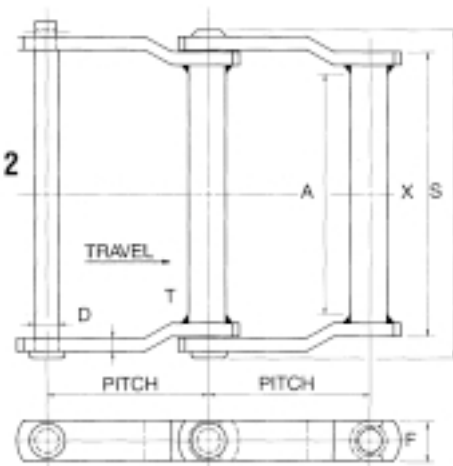


FIGURE 2



CAST MALLEABLE IRON DRAG CHAIN - FIG. 1

Chain No.	Average Pitch Inches	Approx. Links In 10 Ft.	Average Weight Per Ft. Lbs.	Average Ultimate Strength Lbs.	Rated Working Load Lbs.	DIMENSIONS IN INCHES				
						Barrel Length	Side Bar Width	Max. Spkt. Width	Pin Dia.	Over-All Width
				Duramal	Duramal	X	F	A	D	S
H102	5.000	24	10.7	35,000	5,830	7 <sup>3</sup> / <sub>4</sub>	1 <sup>1</sup> / <sub>2</sub>	6 <sup>3</sup> / <sub>8</sub>	5 <sup>5</sup> / <sub>8</sub>	9 <sup>7</sup> / <sub>8</sub>
H104P	6.000	20	8.0	35,000	5,830	5 <sup>5</sup> / <sub>16</sub>	1 <sup>1</sup> / <sub>2</sub>	4 <sup>1</sup> / <sub>8</sub>	5 <sup>5</sup> / <sub>8</sub>	7 <sup>11</sup> / <sub>16</sub>
H104W	6.000	20	8.0	35,000	5,830	5 <sup>5</sup> / <sub>16</sub>	1 <sup>1</sup> / <sub>2</sub>	4 <sup>1</sup> / <sub>8</sub>	5 <sup>5</sup> / <sub>8</sub>	7 <sup>3</sup> / <sub>8</sub>
H110	6.000	20	13.3	35,000	5,830	10 <sup>5</sup> / <sub>8</sub>	1 <sup>1</sup> / <sub>2</sub>	9	5 <sup>5</sup> / <sub>8</sub>	12 <sup>11</sup> / <sub>16</sub>
H113	6.000	20	16.7	37,500	6,400	10 <sup>5</sup> / <sub>8</sub>	1 <sup>9</sup> / <sub>16</sub>	9	3 <sup>3</sup> / <sub>4</sub>	12 <sup>3</sup> / <sub>4</sub>
H120	6.000	20	18.5	47,500	7,920	10 <sup>1</sup> / <sub>8</sub>	2	8 <sup>3</sup> / <sub>4</sub>	3 <sup>3</sup> / <sub>4</sub>	12 <sup>3</sup> / <sub>4</sub>

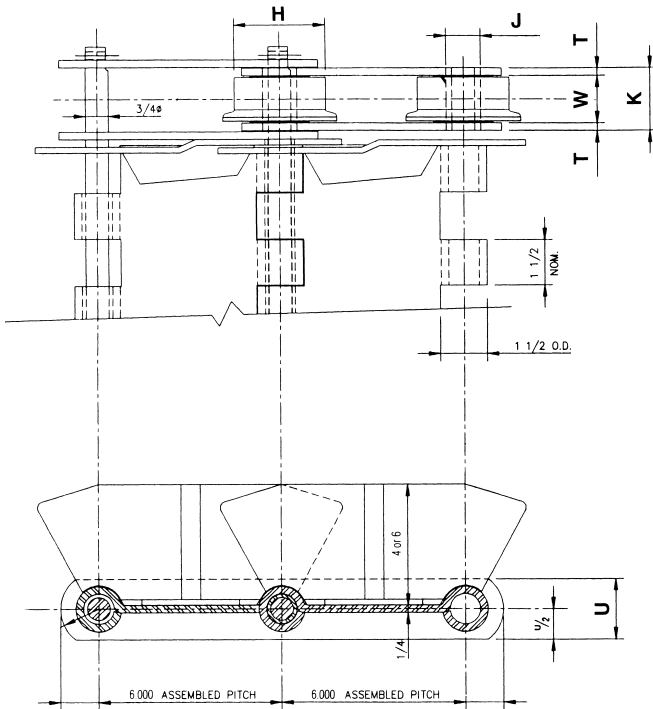
WELDED STEEL DRAG CHAIN - FIG. 2

Chain No.	Average Pitch Inches	Approx. Links In. 10 Ft.	Average Weight Per Ft. Lbs.	Rated Working Load Lbs.	DIMENSIONS IN INCHES					
					Length of Bearing	Side Bar Width	Max. Spkt. Width	Rivet Dia.	Over All Width	Side Bar Thickness
					X	F	A	D	S	T
WD102	5.000	24	11.8	8,500	7 <sup>3</sup> / <sub>4</sub>	1 <sup>1</sup> / <sub>2</sub>	6 <sup>3</sup> / <sub>8</sub>	3 <sup>3</sup> / <sub>4</sub>	9 <sup>1</sup> / <sub>4</sub>	3 <sup>3</sup> / <sub>8</sub>
WDH102	5.000	24	11.8	10,000	7 <sup>3</sup> / <sub>4</sub>	1 <sup>1</sup> / <sub>2</sub>	6 <sup>3</sup> / <sub>8</sub>	3 <sup>3</sup> / <sub>4</sub>	9 <sup>1</sup> / <sub>4</sub>	3 <sup>3</sup> / <sub>8</sub>
WD104	6.000	20	8.7	8,500	5 <sup>3</sup> / <sub>8</sub>	1 <sup>1</sup> / <sub>2</sub>	4 <sup>1</sup> / <sub>8</sub>	3 <sup>3</sup> / <sub>4</sub>	6 <sup>7</sup> / <sub>8</sub>	3 <sup>3</sup> / <sub>8</sub>
WDH104	6.000	20	8.7	10,000	5 <sup>3</sup> / <sub>8</sub>	1 <sup>1</sup> / <sub>2</sub>	4 <sup>1</sup> / <sub>8</sub>	3 <sup>3</sup> / <sub>4</sub>	6 <sup>7</sup> / <sub>8</sub>	3 <sup>3</sup> / <sub>8</sub>
WD110	6.000	20	12.0	8,500	10 <sup>3</sup> / <sub>8</sub>	1 <sup>1</sup> / <sub>2</sub>	9	3 <sup>3</sup> / <sub>4</sub>	11 <sup>7</sup> / <sub>8</sub>	3 <sup>3</sup> / <sub>8</sub>
WDH110	6.000	20	12.0	10,000	10 <sup>3</sup> / <sub>8</sub>	1 <sup>1</sup> / <sub>2</sub>	9	3 <sup>3</sup> / <sub>4</sub>	11 <sup>7</sup> / <sub>8</sub>	3 <sup>3</sup> / <sub>8</sub>
WD113	6.000	20	15.0	9,200	10 <sup>5</sup> / <sub>8</sub>	1 <sup>1</sup> / <sub>2</sub>	9	7 <sup>7</sup> / <sub>8</sub>	12 <sup>1</sup> / <sub>2</sub>	1 <sup>1</sup> / <sub>2</sub>
WDH113	6.000	20	15.0	11,700	10 <sup>5</sup> / <sub>8</sub>	1 <sup>1</sup> / <sub>2</sub>	9	7 <sup>7</sup> / <sub>8</sub>	12 <sup>1</sup> / <sub>2</sub>	1 <sup>1</sup> / <sub>2</sub>
WD120	6.000	20	19.4	11,500	10 <sup>1</sup> / <sub>8</sub>	2	8 <sup>3</sup> / <sub>4</sub>	7 <sup>7</sup> / <sub>8</sub>	12	1 <sup>1</sup> / <sub>2</sub>
WDH120	6.000	20	19.4	15,000	10 <sup>1</sup> / <sub>8</sub>	2	8 <sup>3</sup> / <sub>4</sub>	7 <sup>7</sup> / <sub>8</sub>	12	1 <sup>1</sup> / <sub>2</sub>



# 6" Pitch Enduro-Flite

ISO 9001:2000



With over 120 years of expertise in the chain and conveyor industry, Webster offers its line of formed piano hinge conveyors, trademarked ENDURO-FLITE. ENDURO-FLITE is available in 6", 9", and 12" pitch form and in widths up to 120".

## BELT NUMBERING

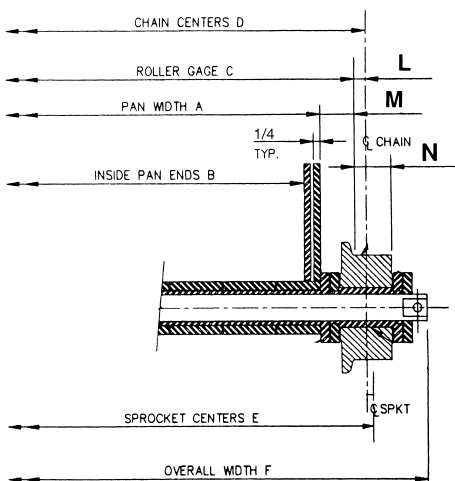
6 250 T - A - 4 - 624F - 3

Pitch \_\_\_\_\_  
Pan Thk. \_\_\_\_\_  
Tube Type \_\_\_\_\_  
Nom. Width \_\_\_\_\_  
Wing Ht. \_\_\_\_\_  
Chain No. \_\_\_\_\_  
Pin Style \_\_\_\_\_

## CHAIN DIMENSIONS

• Chain No.	Avg. Pitch Inches	++ Avg. Ultimate Strength Lbs.	++ Rated Working Load Lbs.	Friction Factor		General Dimensions				Pin	Sidebars	Rollers		
						Inside Sidebars	BSHG. O.D.	BSHG. Length	Roller Gauge			Dia.	Thickness X-Height	Tread Dia
				fr										
				Dry	Lubed					W	J			
614P	6.000	32,000	4600	0.23	0.16	1¼	1½	1¾	**	¾	¼ x 2	2½	1½	**
624F	6.000	32,000	5400	0.19	0.13	1⅞	1½	2⅞	⅜ <sub>32</sub>	¾	¼ x 2	3	1⅞	1⅜ <sub>32</sub>
625F	6.000	32,000	5400	*	0.05	1⅞	1½	2⅞	⅜ <sub>32</sub>	¾	¼ x 2	3	1⅞	1⅜ <sub>32</sub>
634F	6.000	50,000	7200	0.14	0.10	2	1½	2¾	1⅞ <sub>32</sub>	¾	⅝ x 2	4	1½	⅞
635F	6.000	50,000	7200	*	0.05	2	1½	2¾	1⅞ <sub>32</sub>	¾	⅝ x 2	4	1⅞	⅞

\* Have Dimensions Verified for Installation Purposes  
++ Per Strand  
\* Antifriction Bearing in Roller  
\*\* Plane Face Roller



## BELT DATA

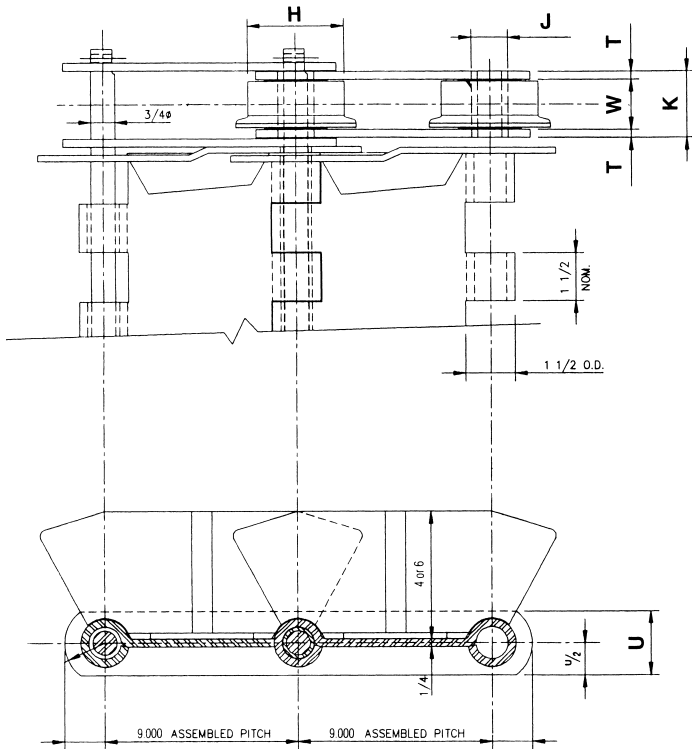
Chain No.	614P	624F	625F	634F	635F
Pan Width A	12 to 96 Wide				
Ins. Wings B	A - 1 1/16	A - 1 1/16	A - 1 1/16	A - 1 1/16	A - 1 1/16
Rllr. Gage C	N/A	A + 1 1/16	A + 1 1/16	A + 2 1/16	A + 2 1/16
Chain Ctrs. D	A + 2 5/16	A + 2 5/16	A + 2 5/16	A + 3 1/16	A + 3 1/16
Sprkt. Ctrs. E	A + 2 5/16	A + 3	A + 3	A + 4	A + 4
Overall Width F #	A + 5 3/8	A + 6 1/4	A + 6 1/4	A + 8 1/8	A + 8 1/8
Weight (Lbs./Ft.) - 4" Wings	27 + (A x 1.35)	30 + (A x 1.35)	30 + (A x 1.35)	49 + (A x 1.35)	49 + (A x 1.35)
Inner Tube	.970 O.D. x .780 I.D.				
Min. Reflex Radius - 4" Wings	36 Inches				

# Add 1/4" for Style 5 Thru Rod & 3/8" for Style 5G Thru Rod

ALL WEBSTER ENDURO-FLITE CHAIN COMPONENTS ARE FULLY INTERCHANGEABLE WITH CURRENT MAJOR PIANO HINGE MANUFACTURERS.

# 9" Pitch Enduro-Flite

ISO 9001:2000



Webster understands the importance of keeping your materials in transit. When you choose ENDURO-FLITE, you get a product from a company that understands the importance of chain design in controlling pitch and hole quality. You get pans made with precision formed hinges for greater accuracy and interchangeability. Pans are available in solid, dimpled, and perforated form. Sidebars are constructed from 1040 fine grain steel with chain thru rods made of superior cold finished, stress proof steel. An inner tube design protects the thru rods from abrasive contaminants and virtually eliminates crank shaft wear. Chain wings are formed, stamped and jig welded for correct positioning and controlled offset for improved chain articulation.

## BELT NUMBERING

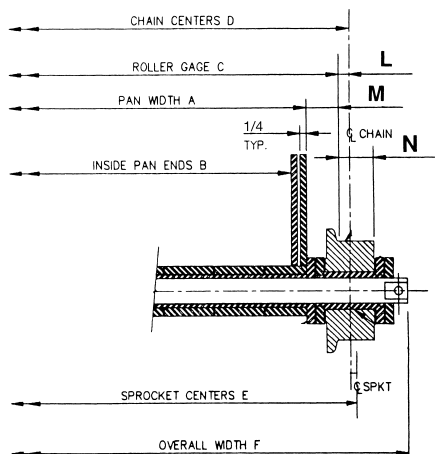
9 250 T - A - 4 - 924F - 3

Pitch \_\_\_\_\_  
Pan Thk. \_\_\_\_\_  
Tube Type \_\_\_\_\_  
Nom. Width \_\_\_\_\_  
Wing Ht. \_\_\_\_\_  
Chain No. \_\_\_\_\_  
Pin Style \_\_\_\_\_

## CHAIN DIMENSIONS

• Chain No.	Avg. Pitch Inches	++ Avg. Ultimate Strength Lbs.	++ Rated Working Load Lbs.	Friction Factor		General Dimensions				Pin	Sidebars	Rollers		
						Inside Sidebars	BSHG. O.D.	BSHG. Length	Roller Gauge	Dia.	Thickness X-Height	Tread Dia	Tread Width	Chain To Wheel Ga.
				fr										
				Dry	Lubed									
914P	9.000	32,000	4600	0.23	0.16	1¼	1⅞	1¾	**	¾	¼ x 2	2½	1⅞	**
924F	9.000	32,000	5400	0.19	0.13	1⅞	1⅞	2⅞	⅜	¾	¼ x 2	3	1⅞	1⅞
925F	9.000	32,000	5400	*	0.05	1⅞	1⅞	2⅞	⅜	¾	¼ x 2	3	1⅞	1⅞
934F	9.000	50,000	7200	0.14	0.10	2	1⅞	2¾	1⅞	¾	¾ x 2	4	1⅞	⅞
935F	9.000	50,000	7200	0.14	0.05	2	1⅞	2¾	1⅞	¾	¾ x 2	4	1⅞	⅞

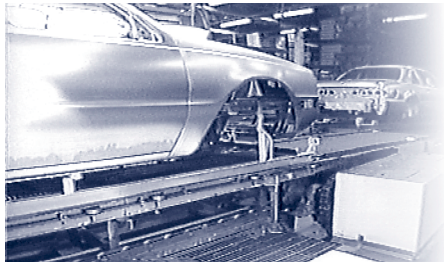
- \* Have Dimensions Verified for Installation Purposes
- \*\* Per Strand
- \* Antifriction Bearing in Roller
- \*\* Plane Face Roller



## BELT DATA

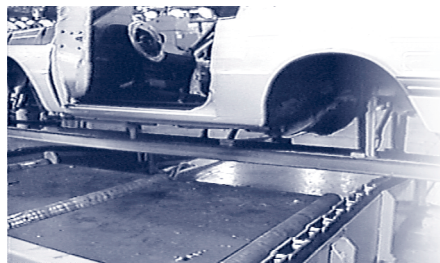
Chain No.	914P	924F	925F	934F	935F
Pan Width A	12 to 96 Wide				
Ins. Wings B	A - 1 1/16	A - 1 1/16	A - 1 1/16	A - 1 1/16	A - 1 1/16
Rllr. Gage C	N/A	A + 1 1/16	A + 1 1/16	A + 2 1/16	A + 2 1/16
Chain Ctrs. D	A + 2 3/4	A + 2 3/4	A + 2 3/4	A + 3 1/8	A + 3 1/8
Sprkt. Ctrs. E	A + 2 3/4	A + 3	A + 3	A + 4	A + 4
Overall Width F #	A + 5 3/8	A + 6 1/4	A + 6 1/4	A + 8 1/8	A + 8 1/8
Weight (Lbs./Ft.) - 4" Wings	23 + (A x 1.35)	25 + (A x 1.35)	25 + (A x 1.35)	38 + (A x 1.35)	38 + (A x 1.35)
Weight (Lbs./Ft.) - 6" Wings	29 + (A x 1.35)	31 + (A x 1.35)	31 + (A x 1.35)	44 + (A x 1.35)	44 + (A x 1.35)
Inner Tube	.970 O.D. x .780 I.D.				
Min. Reflex Radius - 4" Wings	30 Inches				
Min. Reflex Radius - 6" Wings	42 Inches				

# Add 1/4" for Style 5 Thru Rod & 3/8" for Style 5G Thru Rod



Webster Industries offers a broad line of component parts and accessories for material handling systems. Customers' immediate needs for special and standard items are handled with promptness and total concern for accurate, fast order-entry and delivery.  
RETROFIT-REPLACEMENT-MAINTENANCE

- Cast and Steel Sprockets  
And Traction Wheels
- End Attachments
- Bucket, Flight,  
And Pipe Wings
- Standard and Leak-Proof  
Apron Conveyors
- Apron Conveyor Chains  
And Pans
- Piano Hinge Apron  
Chains And Pans
- Medium and Heavy Duty  
Vibrating Conveyors
- Malleable Iron Castings



# Manufacturer of Automotive Chain and Conveying Systems For Over 125 Years

## CUTBACK DOWNTIME AND COSTS!

### • A Challenge to Compare

Webster has proven to be a solid company. With constant changes in other suppliers domestic and abroad, you can always rely on Webster's U.S.A. made products to consistently provide you with precision products at competitive market prices.

### • Experience and Knowledge in the Automotive Industries

For decades, Webster has proven experience in automotive material handling components and systems.

### • Quality and Precision in Chain Construction and Manufacturing

Webster provides only the highest standards in chain quality, backed by warranties, and over a century of successful product performance.

### • Dependability Guaranteed

Webster products are fully guaranteed and warranty information is available with each order.

### • The Best Don't Rest

Webster is not just your average chain manufacturer, but one who improves its products continuously. One indication of this is Webster's formulation of a custom alloy steel rivet, trademarked DURALLOY. DURALLOY has replaced the carbon pin of the past as a standard thus elevating the total quality and dependability of Webster chain.

### • On-Time Delivery

With three plants throughout the USA set up for stock and quick-custom processing, emphasis is on fast turn around for Webster customers to reduce their downtime and costs.

### • Competitive Pricing on Stock and Custom Products

Consistent, competitive pricing is routine at Webster because chain is Webster's specialty and primary product.

### • Customer Service Before and After the Sale

Webster's regionalized customer service department employs a group of technically competent individuals who are eager to answer specific product questions and provide prompt courteous service before and after the sale.

### • Reliable and Knowledgeable National Distributor Network

Webster's national distributor network extensively covers the USA from coast to coast. They are reputable and knowledgeable in material handling and power transmission products through years of supplying quality Webster products.

### • Approved By Major Automotive Manufacturers

For the best chain value, specify Webster. Not only will you get precision, quality and experience, but you will get chain that is most recommended by major automotive manufacturers. After all, what other chain manufacturer ships 75 miles of CC5 chain annually?

 **WEBSTER INDUSTRIES, INC.**

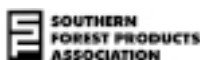
**800-243-9327**



325 Hall Street  
Tiffin, OH 44883  
800-243-9327  
419-447-8232  
Fax: 419-448-1618



3800 Second Street (39301)  
P.O. Box 1747  
Meridian, MS 39302  
800-243-9327  
601-482-0183  
Fax: 601-693-5918



9620 S.W. Herman Road  
P.O. Box 519  
Tualatin, OR 97062  
800-243-9327  
503-692-4818  
Fax: 503-692-8268