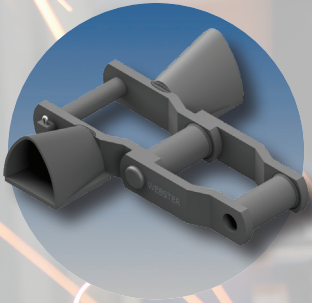




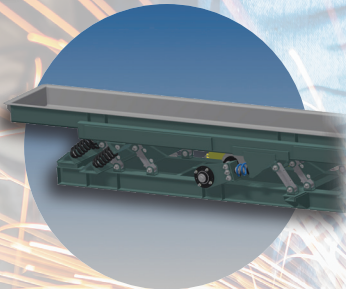
OUR PRODUCTS



ENGINEERED CLASS CHAIN



SPROCKETS



VIBRATING CONVEYORS

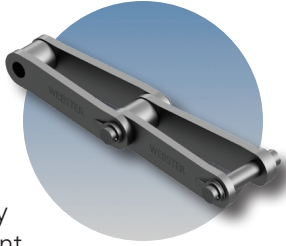
ENGINEERED TO EXCEL

MANUFACTURED TO EXCEED



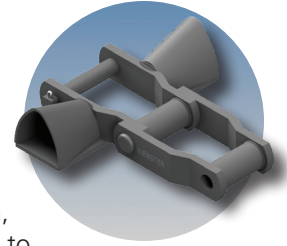
CAST CHAINS

Cast chains are manufactured using cast links and heat treated steel pins. They are designed with slightly larger clearances that allow material to easily work its way out of the chain joint. Cast chains are used in a variety of applications such as sewage treatment, water filtration, fertilizer handling, sugar processing and waste wood conveying. They are readily available from stock with standard attachments.



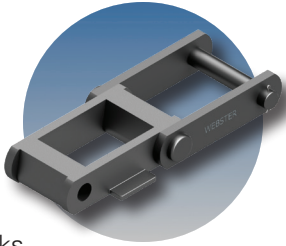
MILL CHAINS

Welded steel mill chains are manufactured with heat treated pins, steel sidebars and barrels. Mill chains are furnished in various configurations of pitch, construction and heat treatment to suit each operating environment. Their simple, yet rugged, construction makes them ideal for the forest products, grain, ethanol and recycling industries. Mill chains are readily available from stock with custom and standard attachments.



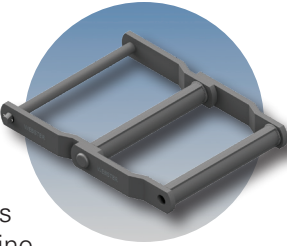
COMBINATION CHAINS

Combination chains are manufactured using hardened cast links, steel sidebars and heat treated steel pins. Combination chains alternate steel sidebars and cast links making them ideal for handling stone, gravel, coal and other abrasive materials. They are commonly used in light to medium-duty bucket elevator applications. Combination chains come with a variety of standard attachments for immediate delivery.



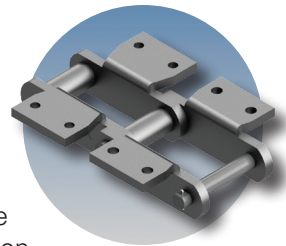
DRAG CHAINS

Welded steel drag chains are manufactured with heat treated pins, steel sidebars and our exclusive two-piece welded barrels. The width of drag chains makes them ideal for conveying fine waste products such as bark, sawdust and machining chips. Their rugged construction gives them excellent wear characteristics. Drag chains are available in a wide range of sizes and configurations. They are readily available from stock with standard and custom attachments.



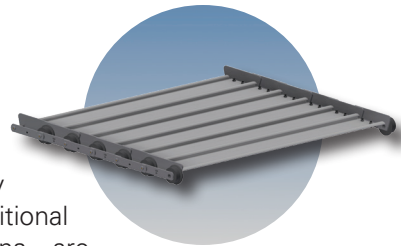
HSB CHAINS

Hardened steel bushed (HSB) chains are manufactured using hardened bushings and heat treated sidebars and pins. HSB chains are available as a more rugged alternative to combination chains. All steel construction gives them higher load ratings as well as longer life. HSB chains are well suited for medium to heavy-duty applications such as cement, gypsum, coal and other abrasive materials. They are readily available from stock with standard attachments.



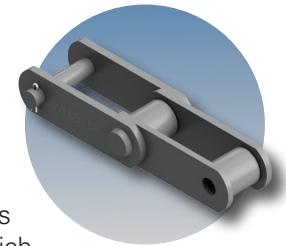
APRON CONVEYORS

Apron conveyors utilize overlapping steel pans mounted on SBR chains. They are available on nearly all SBR chains and with additional outboard rollers. The pans are available in a wide range of thicknesses and widths depending on the application. Apron conveyors come in two designs, standard or leakproof. Their heavy-duty construction makes them ideal for harsh applications carrying heavy, hot and abrasive materials.



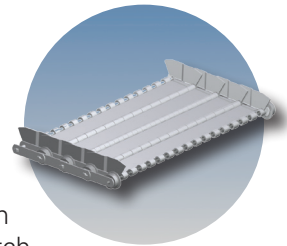
SBR CHAINS

Steel bushed roller (SBR) chains are manufactured with heat treated rollers, hardened bushings and pins and steel sidebars. The roller type construction provides a lower operating friction which helps increase chain life and reduces conveyor design requirements. SBR chains are available in a wide variety of sizes, configurations and designs and can be used in tough industrial applications. SBR chains come with a variety of standard attachments for immediate delivery.



ENDURO-FLITE®

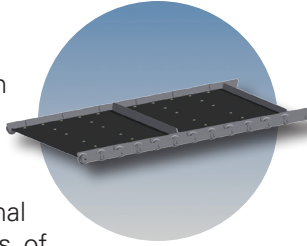
ENDURO-FLITE® is made with SBR chains, alloy steel thru rods, inner tubes and formed or welded hinge steel pans. This light to medium-duty apron is available in 6", 9" or 12" pitch with pan widths from 12" to 120" wide. Side wings are welded to the pan which makes ENDURO-FLITE® ideal for the recycling and stamping industries. ENDURO-FLITE® is available with numerous attachments such as pusher bars, pan stiffeners and wear pads for specific application needs.





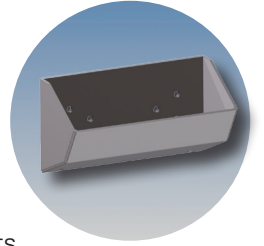
COMBO-BELT®

Combo-Belt® is made from various combination, (SBR), (HSB), and welded steel mill chains giving this product unlimited possibilities. Our normal design incorporates two strands of chain, support channels or cross bars, a rubber or PVC belt, and pusher cleats. It moves fine or delicate product well while having an application specific chain design. Combo-Belt® is available from 12" to 120" wide. They are well suited for recycling, waste and food processing conveyors.



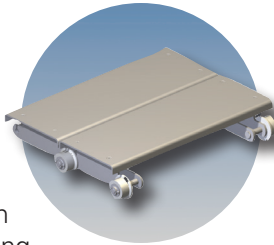
BUCKETS

Buckets are manufactured from cast malleable iron or fabricated steel. Cast buckets are made in a wide variety of standard styles and sizes that resist wear, rust and corrosion. Fabricated steel buckets are laser cut and robotically welded for a precise match with the chain attachment. Additional options such as hardface welds and wear lips are available to resist abrasion. Both cast malleable iron and fabricated steel buckets are used in elevator applications.



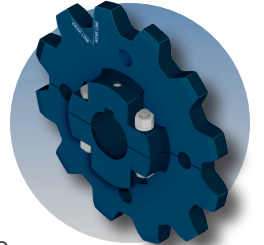
FLAT AND SLAT TOP CHAINS

Flat and slat top chains are typically designed with a flat steel top plate either welded (flat top) or bolted (slat top) to an SBR chain. Outboard rollers with bearings are added to reduce rolling friction. The top plate surface provides excellent floor level conveying. Flat and slat tops carry large items such as cars, trucks, tractors, generators and engines. These chains can be custom designed for your specific application needs.



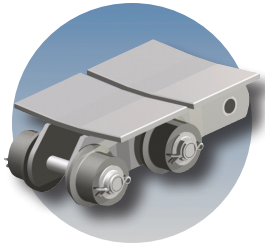
SPROCKETS

Sprockets and traction wheels are manufactured from cast iron or steel plate. Cast iron sprockets come with chilled rims for additional wear resistance. Steel plate sprockets are flame-cut, flame-hardened. This hardening insures proper wear between the sprocket and chain. Sprockets and traction wheels are manufactured in a variety of styles (solid, split and segmental) and profiles (high profile, low profile, hunting tooth, gap tooth and mud relief).



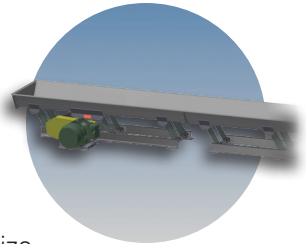
GULL WING CONVEYOR CHAINS

Gull wing chains are manufactured with formed steel top plates welded to SBR chains. Outboard rollers are used as the carrying rollers, which are mounted on the outside of the chain. The formed top plate makes gull wing chains well suited for preventing the rolling of steel coils, paper rolls and other products in floor level conveying. These chains can be custom designed in various sizes for your specific application needs.



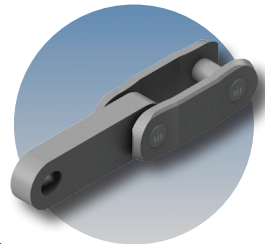
FS VIBRATING CONVEYORS

Flat spring (FS) conveyors are fabricated using composite springs, high strength wear resistant pans and a superior positive eccentric drive. FS vibrating conveyors utilize sectional construction for easy field assembly. They are available with a wide variety of features and are particularly well suited for conveying hot, heavy, sharp or abrasive materials which are not readily handled on other types of conveyors.



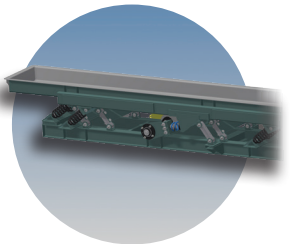
DOUBLE FLEX CHAINS

Double flex chains are manufactured with hardened steel center links, sidebars and pins. They are designed with curved sidebars and elliptical holes in the center link and are ideal for running in multidirectional applications. The outer edges of both the sidebars and center links are induction hardened in all critical wear areas. Double flex chains are primarily used in the dairy and forest product industries.



ACTION VIBRATING CONVEYORS

ACTION's natural frequency vibratory conveyors are made to order for the efficient transport of bulk materials in a wide range of application. Process features such as screens, metal detectors, skirts, custom spouts, multiple discharge points, varying widths, hoods and liners can be integrated to suit the application.





THE WEBSTER VALUE

For over 145 years, Webster has provided conveying solutions to a diverse range of markets with our extensive variety of products and industry expertise. A key to our success is making a difference through industry, work, self, family and community.



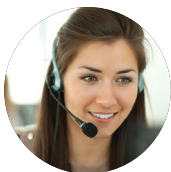
AMERICAN MATERIALS, AMERICAN LABOR & AMERICAN PRIDE

Webster's reputation for high-quality products originates from the same principles they were founded on in 1876. Our Made in the USA brand is demonstrated through our domestic supply chain partners and our American workforce.



VERTICALLY INTEGRATED MANUFACTURING FACILITY

While companies are relying increasingly on outsourcing for production needs, Webster has invested in building, maintaining and growing a vertically integrated manufacturing system.



WORLD CLASS CUSTOMER SUPPORT & DELIVERIES

Providing value to customers is Webster's top priority. Our commitment and responsiveness to customers, industry best deliveries and our engineered solutions are what set us apart from the competition.



SUPERIOR QUALITY & INNOVATION

Webster's strict manufacturing, ISO quality standards and continuous innovation ensure that we are providing our customers with the highest quality products in the industry.

AN EMPLOYEE-OWNED COMPANY