



WEBSTER INDUSTRIES

MEAT INDUSTRY

DURABILITY AND QUALITY
THAT YOU CAN DEPEND ON
FOR YOUR TOUGHEST
APPLICATIONS



websterchain.com • 800-243-9327
ISO9001 Registered

DELRIN BUSHED ROLLER CHAINS

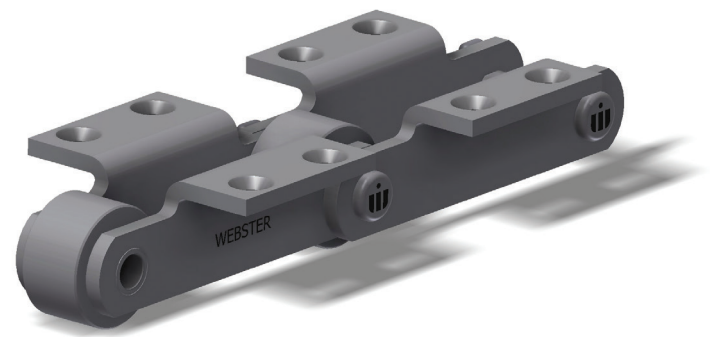
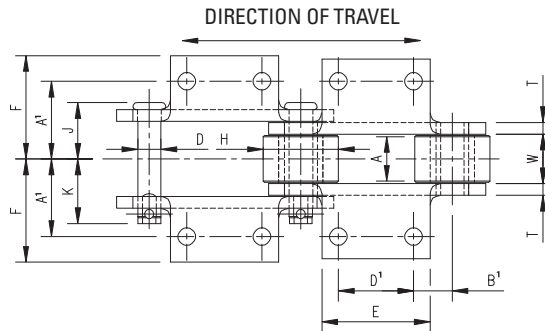
Delrin bushed roller chains are designed specifically for the meat processing industry. Stainless steel, zinc plated and special bushed parts provide excellent service without the threat of contamination. Special rollers can be furnished to meet customer requirements.

MATERIAL

Sidebars are zinc-plated medium carbon steel. Pins are made of heat-treated alloy steel that have been zinc plated for corrosion resistance. Chain bushings are heat-treated stainless steel. Rollers are case-hardened steel that have been zinc plated with a Delrin sleeve pressed in, reducing friction and increasing corrosion resistance. Various stainless steels can be used for all components as the operating atmosphere requires.

ASSEMBLY

Delrin bushed chains are cottered construction with stainless steel cotters.



INTERCHANGEABILITY

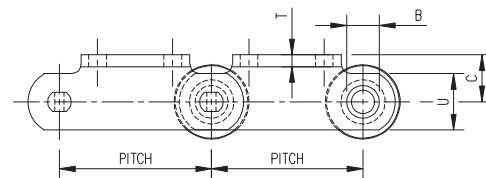
Delrin bushed chains are interchangeable with other standard makes of corresponding sizes and numbers.

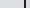
APPLICATION

Delrin bushed chains are used in the meat industry, predominantly in conveyors for visceration tables.

OPERATION

Delrin bushed chains are best suited for slow- or moderate-speed applications. Maximum chain speed depends upon sprocket size.



Chain No.	Average Pitch Inches	Approx. Links in 10 Feet	Average Weight Per Ft. Lbs.	Average Ultimate Strength in Lbs.	Rated Working Load in Lbs. 	General Dimensions			Pins	Sidebars		Bushings	Rollers	
						Inside Sidebars	⌀ To Cotter End	⌀ To Head or Rivet End	Dia.	Thk.	Height	Outside Dia.	Tread Dia.	Tread Width
S1113D	4.040	30	11.4	28,000	3,150	1 ⁵ / ₁₆	1 ²⁵ / ₃₂	1½	⅝	⅝ ₁₆	1½	⅞	2	1⅜ ₁₆
S1670D	6.000	20	9.0	28,000	3,150	1 ⁵ / ₁₆	1 ²⁵ / ₃₂	1½	⅝	⅝ ₁₆	1½	⅞	2¼	1⅜ ₁₆

K2 ATTACHMENT →→

Chain No.	A ¹	B ¹	C	D ¹	E	F Max.	T	Weight Per Foot-Lbs.	Bolt Size
								Δ	
S1113D	2 ¹ / ₁₆	1 ¹⁷ / ₆₄	1 ¹ / ₄	1 ¹ / ₂	2 ⁷ / ₈	2 ³ / ₄	5/16	11.4	3/8
S1670D	2	2	1 ³ / ₈	2	3 ¹ / ₂	2 ⁵ / ₈	5/16	9.0	3/8

- ☆ Subject to Service Factor Table 9 and Speed Factor Table 11, Section A in Webster #400 Master Catalog.
- Attachments, which are on one side of the chain only, will be on the pinhead side unless otherwise specified. Normally furnished right-hand and left-hand.
- Δ Weights of attachments coupled every pitch.



800-243-9327 • websterchain.com

Form No MI 2017
Printed in the USA – MLAD/.5M