

ES CONNECT™

Webster Industries is proud to announce the launch of its innovative ES Connect™ (Easy & Safe) system. Designed to address safety concerns, this patent-pending technology is set to revolutionize field operations by dramatically reducing time, effort, and costs associated with field connections.

KEY BENEFITS

EASY

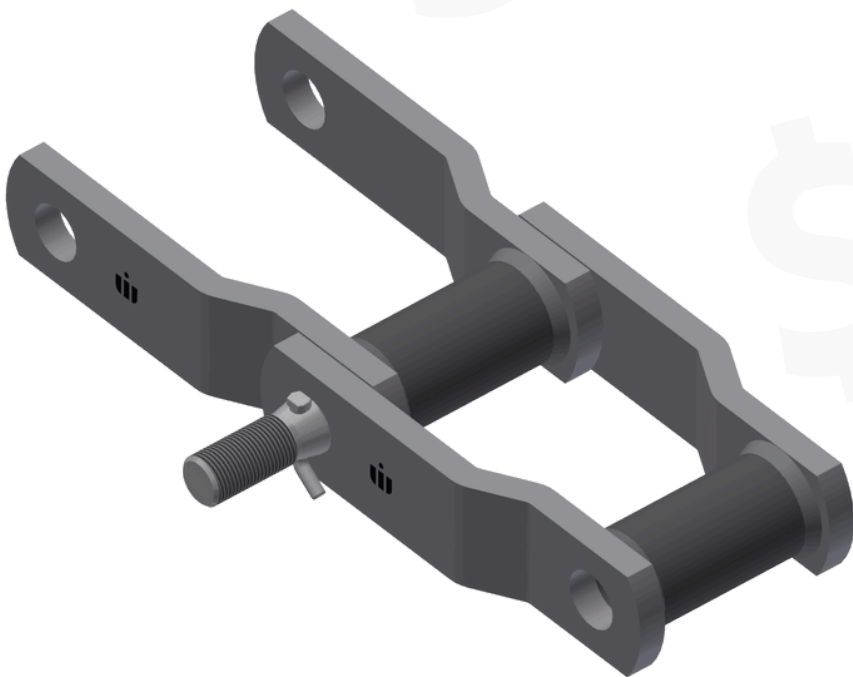
- One-person operation - simplified process eliminates the need for additional personnel

SAFE

- Eliminates swinging hammers
- No need for bulky, heavy tools
- Minimizes unnecessary hot work requirements
- Reduces potential injuries

COST SAVINGS

- Each field connection time reduced up to 20 minutes - significantly boosting efficiency and operational uptime
- 40-minute time savings - considering time and manpower savings
- Reduces unplanned downtime - promotes faster chain repair



ES
CONNECT™
EASY & SAFE



CLICK HERE TO
VIEW THE
INSTALLATION
VIDEO